

## Floor standing exposed type

### PFFY-P VKM-E2

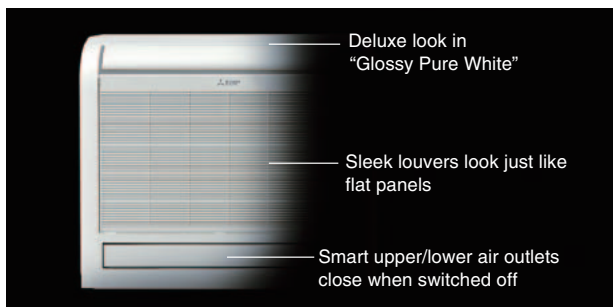


#### Sophisticated Design

An innovative floor-standing air-conditioner from Mitsubishi Electric. A pleasing mix of streamlined form and diversified function. Engineered to keep room walls free, provide comfortable cooling in summer, and toasty heating in the winter.

The "Glossy Pure White" color ensures a deluxe look, a perfect match for any room. Both upper and lower air outlets remain closed when switched off, a smart and striking image.

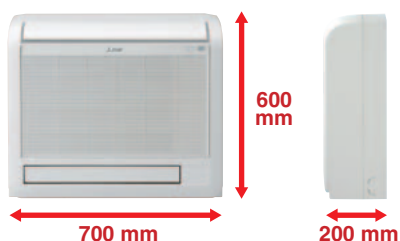
A superb new air-conditioner from Mitsubishi Electric, providing a handsome fit for your own distinctive interior.



#### Slim yet Mighty

The unit's body is slim and trim, highlighting its compact essence. An ideal size for living rooms, bedrooms, and more.

The removable and washable front panel makes cleaning a snap. Easy, regular cleaning helps your air-conditioner stay beautiful while maintaining its energy-efficient operation.

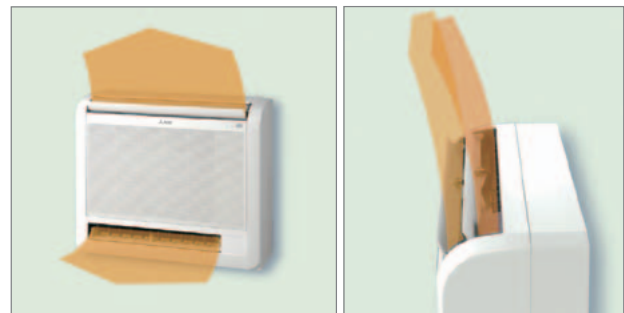


#### Optimum Air Distribution

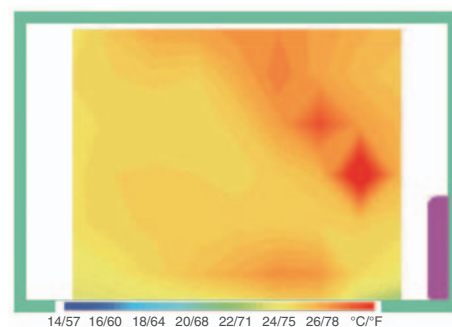
Comfy room temperatures are accomplished through optimum, powerful and efficient air distribution through the upper and lower air outlets.

The upper vane angle is remote controllable, with 5 air flow direction levels (+Swing and Auto modes) and 4 wind power levels (+Auto mode).

By setting the vane angle almost vertical, bothersome direct wind can be avoided for increased comfort.



The air from both the upper and lower air outlets is optimally controlled and distributed evenly to every corner of the room. In heating mode, the warm air is smartly controlled to stay at the floor level: Say goodbye to chilly feet!



## Specifications

Model			PFFY-P20VKM-E2	PFFY-P25VKM-E2	PFFY-P32VKM-E2	PFFY-P40VKM-E2
Power source			1-phase 220-240V 50Hz			
Cooling capacity	*1	kW	2.2	2.8	3.6	4.5
	*1	BTU/h	7,500	9,600	12,300	15,400
Heating capacity	*1	kW	2.5	3.2	4.0	5.0
	*1	BTU/h	8,500	10,900	13,600	17,100
Power consumption	Cooling	kW	0.025	0.025	0.025	0.028
	Heating	kW	0.025	0.025	0.025	0.028
Current	Cooling	A	0.20	0.20	0.20	0.24
	Heating	A	0.20	0.20	0.20	0.24
External finish			Plastic (Pure white)			
Dimension H x W x D		mm	600 x 700 x 200			
		in.	23-5/8 x 27-9/16 x 7-7/8			
Net weight		kg (lbs.)	15 (34)			
Heat exchanger			Cross fin (Aluminium plate fin and copper tube)			
Fan	Type x Quantity		Line flow fan x 2			
	Airflow rate (Lo-Mid-Hi-SHi)	*2 m³/min	5.9-6.8-7.6-8.7	6.1-7.0-8.0-9.1	6.1-7.0-8.0-9.1	8.0-9.0-9.5-10.7
	External static pressure	Pa	0			
Motor	Type		DC motor			
	Output		0.03 x 2			
Air filter			PP honeycomb fabric (Catechin Filter)			
Refrigerant pipe diameter	Gas (Flare)	mm (in.)	ø12.7 (ø1/2)			
	Liquid (Flare)	mm (in.)	ø6.35 (ø1/4)			
Field drain pipe diameter		mm (in.)	I.D.16 (5/8)			
Sound pressure level (Lo-Mid-Hi-SHi)		*2 dB (A)	27-31-34-37	28-32-35-38	28-32-35-38	35-38-42-44

### Notes:

\*1 Cooling/heating capacity indicates the maximum value at operation under the following condition.

Cooling Indoor : 27°C(81°F)DB/19°C(66°F)WB, Outdoor : 35°C(95°F)DB

Heating Indoor : 20°C(68°F)DB, Outdoor : 7°C(45°F)DB/6°C(43°F)WB

\*2 Airflow rate/Sound pressure level are in (low-middle-high-shigh).

\*3 It is measured in anechoic room.