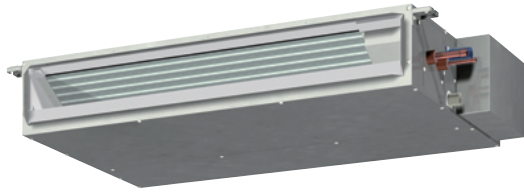


Low static pressure type

PEFY-P VMS1(L)-E



Compact design with a height of only 200 mm [7-7/8 in.] (all models) and a width of 790 mm [31-1/8 in.] (P15 to P32), 990 mm [39 in.] (P40 and P50), or 1190 mm [46-7/8 in.] (P63)

Thin body design with a height of only 200 mm [7-7/8 in.] (all models) enables installation in a narrow space in the ceiling.

PEFY-P VMX(L)-E(1)		P15	P20	P25	P32	P40	P50	P63
Height	mm [in.]	200 [7-7/8]						
Width	mm [in.]	790 [31-1/8]			990 [39]		1190 [46-7/8]	



Low-noise design

The centrifugal fan and coil are designed to reduce noise, making these models suitable for spaces where quietness is required.

Sound pressure level table (Standard static pressure) at 15 Pa dB(A)

Sound Pressure Level	Capacity		P15	P20	P25	P32	P40	P50	P63
	Fan Speed	High	28	29	30	32	33	35	36
		Mid	24	25	26	27	30	32	33
		Low	22	23	24	24	28	30	30

Selectable external static pressure

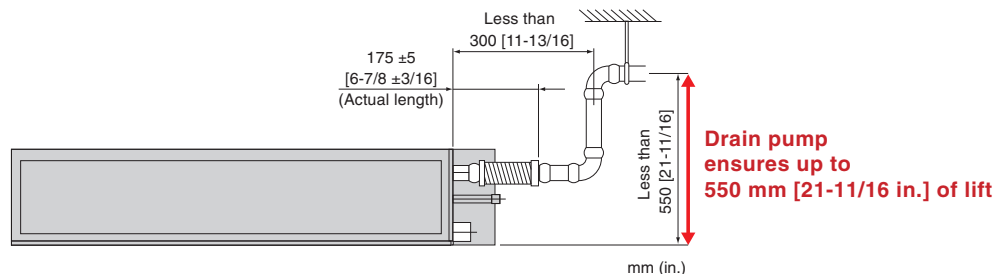
The unit may have a compact body, but its external static pressure can be up to 50 Pa.

The external static pressure can be selected from 5, 15, 35 and 50 Pa.

(The factory default is 15 Pa.)

Models with and without drain pump are available

PEFY-P VMS1 is provided with a drain pump as standard and does not require a drain trap. PEFY-P VMS1L which is model without drain pump is recommended for places where low-noise operation is required (i.e. hotels)



Specifications

Model			PEFY-P15VMS1(L)-E	PEFY-P20VMS1(L)-E	PEFY-P25VMS1(L)-E	PEFY-P32VMS1(L)-E	PEFY-P40VMS1(L)-E	PEFY-P50VMS1(L)-E	PEFY-P63VMS1(L)-E
Power source			1-phase 220-240V 50Hz/1-phase 220-240V 60Hz						
Cooling capacity		*1 kW	1.7	2.2	2.8	3.6	4.5	5.6	7.1
		*1 BTU/h	5,800	7,500	9,600	12,300	15,400	19,100	24,200
Heating capacity		*1 kW	1.9	2.5	3.2	4.0	5.0	6.3	8.0
		*1 BTU/h	6,500	8,500	10,900	13,600	17,100	21,500	27,300
Power consumption		*3 Cooling kW	0.05 [0.03]	0.05 [0.03]	0.06 [0.04]	0.07 [0.05]	0.07 [0.05]	0.09 [0.07]	0.09 [0.07]
		Heating kW	0.03 [0.03]	0.03 [0.03]	0.04 [0.04]	0.05 [0.05]	0.05 [0.05]	0.07 [0.07]	0.07 [0.07]
Current		*3 Cooling A	0.42 [0.31]	0.47 [0.36]	0.50 [0.39]	0.50 [0.39]	0.56 [0.45]	0.67 [0.56]	0.72 [0.61]
		Heating A	0.31 [0.31]	0.36 [0.36]	0.39 [0.39]	0.39 [0.39]	0.45 [0.45]	0.56 [0.56]	0.61 [0.61]
External finish			Galvanized						
Dimension H x W x D		mm	200 x 790 x 700				200 x 990 x 700		200 x 1,190 x 700
		in.	7-7/8 x 31-1/8 x 27-9/16				7-7/8 x 39 x 27-9/16		7-7/8 x 46-7/8 x 27-9/16
Net weight		*3 kg (lbs.)	19 (42) [18 (40)]			20 (45) [19 (42)]	24 (53) [23 (51)]		28 (62) [27 (60)]
Heat exchanger			Cross fin (Aluminium fin and copper tube)						
Fan	Type x Quantity		Sirocco fan x 2				Sirocco fan x 3		Sirocco fan x 4
	Airflow rate (Lo-Mid-Hi)	m³/min	5-6-7	5.5-6.5-8	5.5-7-9	6-8-10	8-9.5-11	9.5-11-13	12-14-16.5
		L/s	83-100-117	91-108-133	91-117-150	100-133-167	133-158-183	158-183-217	200-233-275
		cfm	176-212-247	194-229-282	194-247-317	212-282-353	282-335-388	335-388-459	424-494-583
External static pressure		Pa	5-15-35-50						
Motor	Type		DC motor						
	Output		0.096						
Air filter			PP Honeycomb fabric (washable)						
Refrigerant pipe diameter	Gas	mm (in.)	ø12.7 (ø1/2) Brazed						ø15.88 (ø5/8) Brazed
	Liquid	mm (in.)	ø6.35 (ø1/4) Brazed						ø9.52 (ø3/8) Brazed
Field drain pipe diameter			O.D. 32 (1-1/4)						
Sound pressure level (Lo-Mid-Hi) (measured in anechoic room)		dB (A)	22-24-28	23-25-29	24-26-30	24-27-32	28-30-33	30-32-35	30-33-36

Notes:

*1 Cooling/Heating capacity indicates the maximum value at operation under the following condition.

Cooling : Indoor : 27°CDB./19°CWB. (81°FDB./66°FWB.) Outdoor : 35°CDB. (95°FDB.)

Heating : Indoor : 20°CDB. (68°FDB.) Outdoor : 7°CDB./6°CWB. (45°FDB./43°FWB.)

Pipe length : 7.5m (24-9/16ft) Height difference : 0m (0ft)

*2 The external static pressure is set to 15 Pa at factory shipment.

*3 [] is in case of PEFY-P15-63VMS1L-E